
Contents

Title	Author	Page
Articles		
Car of the Month April 1958		19
Lost Inns of Swaffham Fen	Nick Acklam	6
Moonwalk London 2019	David Parr	4
Playground Update	Alex de Giorgio-Miller	3
What Would You Improve?	Alex de Giorgio-Miller	5
Arthur Rank Hospice		16
Bottisham and Burwell Photographic Club	Daphne Hanson	14
Bottisham Village College Adult Learning		21
Burwell and Reach Car Scheme		11
Burwell Museum		15
Burwell Museum Coach Trips		15
Bus Timetable		34
Cambridgeshire Fire and Rescue		16
Church		
Church Services and Events		33
Church Update	Pat Chalmers	23
Letter from the Vicarage	Eleanor Williams	23
Contact Information		36
Diary Dates		35
Crossword		32
Events Team	Debbie Quilter	12
Food Focus	Catherine Gibson	22
From the Editor	David Parr	2
IT Advice	David McMillan	10
Jobs		36
Neighbourhood Plan	Nick Acklam	4
Out and About	Joss Goodchild	17
Parish Council		
Grant Fund		24
Know Your Parish Council		24
Meeting Minutes		25
Rosanna's Ramblings	Rosanna Moseley Gore	13
Sport and Recreation		
Burwell Bowls		21
Reach Riders		11&24
Swaffham Prior School	Helen Bartley	
Tales from a Reach Garden	Danuta Gibson	20
Then and Now	Chris Patterson	36
Whats Growing on at Snakehall Farm	Maz Baker	
Wicken Fen and Anglesey Abbey News	Julia Hammond	19

From the Editor

Well it looks like we have survived another winter and now Spring is in the air – which hopefully is a bit of a theme for this issue.

The bulbs are out and its gradually warming up in readiness, hopefully, for a beautiful day for Reach Fair!



The format for the Fair will be very similar to previous years, with the Fairground being a major attraction, now well supported by the “market”, with food and entertainment on the Top Field (playing field). Focusing the vast majority of the food in one place has meant that our visitors do get to see everything that is on offer at the Fair.



The village stalls will all be on the Lower Green this year, as they always were, which will please those who felt that moving the barbecue to the Top Field last year was not a good decision – we shall see.

As ever, help is going to be needed from villagers to make it all happen on the day. That help has always been generously given in the past and I am sure it will be available again – many thanks go to all those that devote their time to this wonderful annual event.

So I hope you enjoy this issue and that at some stage you read all about a male villager who will be walking the streets of London shortly, wearing a bra

As ever, if you have thoughts about the magazine and how it might develop or change, please let me know.

David Parr
davidmparr@btinternet.com or 07887 563720

Cover Picture courtesy of **Rosanna Moseley Gore**

About the Magazine

The purpose of *Within Reach* is to serve the whole village by circulating information and interesting articles free to every household. Additional copies are available at a charge of £2.50. Issues are published bi-monthly covering the months of Feb/Mar, Apr/May, June/July, Aug/Sept, Oct/Nov and Dec/Jan.

Copies of the Minutes of Parish Council meetings and of *Out of Reach* and *Within Reach* magazines can be found on the village website www.reach-village.co.uk.

The next copy date is 15th May 2019. This magazine is approved and printed by Reach Parish Council.

Our Team

Acting Editor	David Parr
Production	David Parr
Advertising/Treasurer	David Parr
Distribution	Freda Lloyd, Claire Halpin-McDonald and Grahame Radford
Photographer	Rosanna Moseley Gore
24Acres	David Thomas
Cookery	Catherine Gibson
Cricket	Ross Clark
Events Team	Debbie Quilter
Family Focus	Tasha Bridgeman
Fen Chitchat	Lesley Boyle
Gardening	Danuta Gibson
IT Advice	David Macmillan
Parish Council	Susan Bailey
Reach Riders Group	Sue Cameron
Rosanna’s Ramblings	Rosanna Moseley Gore
Snakehall Farm	Maz Baker
Swaffham Prior School	Helen Bartley
Then and Now	Chris Patterson
Thought for the Day	Krysia Newman
Wicken Fen	Julie Hammond
Wildlife	Joss Goodchild

Playground Update

Happy first birthday to our playground! I can't believe it's been a year already, although it certainly feels like I've been down there with the kids 300+ times... It has been a huge success and is still in frequent use at this time of year, despite the chilly weather.



Thanks once again to Cath Tayleur for all her hard work in making it a reality.



Now that the 'new' playground is officially no longer new, it's time for the next project! We've had exciting news about the planned 'Picnic, Play and Grow' project – we were successful in our most recent application and have been very fortunate to have received £10,000 towards this project through the National Lottery Community Fund, so thank you to National Lottery players for making our project possible!



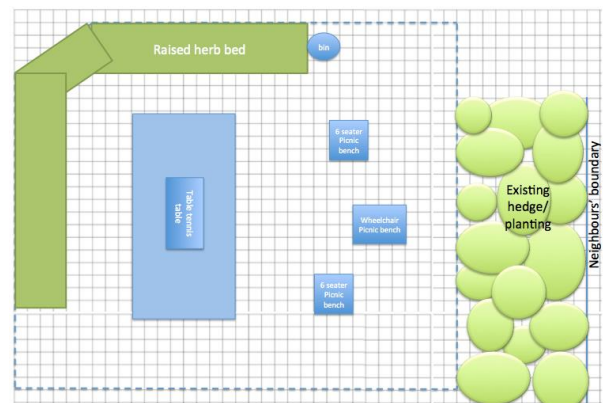
Bags of Help

We are still waiting to hear the outcome of the customer vote for a Bags of Help grant from Tesco – thank you to everyone who voted for us with their blue tokens in January and February. We will find out at the end of March whether we have been granted £4000, £2000 or £1000. Depending on the outcome, and with some tweeking and a top up from the Reach Grant Fund if required, we are now fully funded – hurrah!



The **Garden Team at Prospects Trust** have been busy on site marking out the positions of the raised bed, table tennis table and picnic benches, and getting everything ordered and ready to go off site. We are due to be complete by Reach Fair so look forward to updates posted on our new page on the village website <http://reach-village.co.uk/playground.html> to see their progress!

There will be the all important official opening event and table tennis tournament scheduled on **Sunday 2nd June from midday till 2pm**. Everyone welcome! Soft drinks and cake will be provided – it's a party after all! Bring a picnic and enjoy the new area with friends and family. Tournament sign up on the day – trophy for the winner! We look forward to seeing you there.



Alex de Giorgio-Miller

Play Spaces Officer – Reach Parish Council
a.degiorgiomiller@reachparishcouncil.org

Moonwalk London 2019



The MoonWalk is a night-time charity event organised by UK based grant-making breast cancer charity, Walk the Walk.

Women and men walk either a marathon ("Full Moon") or half-marathon ("Half Moon"), wearing brightly decorated bras to raise money for breast cancer causes. The event is held annually in London, Edinburgh and Iceland with the London Event taking place on May 11th.

And this year I'm going to do it! It'll be 10 years in May since my wife Laura died of breast cancer and my sister-in-law Sue and her daughter Emma invited me to join them.



Its all about fundraising of course. Whilst progress is being made, breast cancer remains a killer – it is a hideous disease, so funding is a priority. If anyone wants to support this excellent charity then please go to my donation page at:

<https://donate.everydayhero.com/d/uL5OeMa4WdaQ6UaCiUG0ew/amount>

In due course I'll let you know how I get on!

David Parr



Neighbourhood Plan

A Neighbourhood Plan is a way of helping Reach to produce a shared vision for our village and to shape its evolution over the next 20 years. Whilst the Reach Neighbourhood Plan will become part of the local planning process, it could be far more than our collective view on bricks and mortar development issues, for example capturing our aspirations for traffic management, community energy schemes and enhancing conservation and recreation in our locality.



The Group developing the Neighbourhood Plan meets every other Wednesday at 7.30pm in the Village Centre. Reach residents are more than welcome to attend and we would be delighted to hear from anybody who wants to become actively involved. Our area - the Parish of Reach - was registered with East Cambridgeshire District Council (ECDC) in February.

We are circulating agendas for our meetings in advance and full details are available on the village website at www.reach-village.co.uk/neighbourhood_plan.html.

At the moment the Group is focused on organising a launch event, probably on a Sunday in June. At this we will be explaining the challenges and opportunities that Reach faces in coming years and we will seek your views on how the village might best respond to those challenges. More details will follow but please come along on the day and tell us what you think. We promise that the event will be interesting for all shades of opinion and all ages. We will also have a stall at Reach Fair to make people aware of what we are trying to achieve.

The Group is actively assessing ECDC's decision to withdraw the latest version of its Local Plan from central Government examination and to fall back on the Local Plan of 2015:

www.eastcamb.gov.uk/sites/default/files/agendas/28%20fc210219%20T208.pdf.

This decision exposes the vulnerability that local communities now face in managing the demand for new houses. It also makes delivery of a Neighbourhood Plan more complex and time consuming, but once ratified by a village vote, our Plan would give Reach more protection against unwanted development and would increase the chances of wanted improvements.

Nick Acklam

Chair Reach Neighbourhood Plan Project Group
acklam@reach-village.co.uk
743749

What Would You Improve?

I've had a number of discussions about areas around the village that people think could be improved and I'm looking at applying for funding to get some of this work done. Suggestions that I've had so far are shown below, but I'm keen to know your thoughts, so drop me an email if you have any comments or suggestions!



Bus Shelters

Both bus shelters are looking a bit tired and estimates are that they haven't had any work done on them for at least 10 years. As well as a spot of repairing and re-staining, there have been thoughts of including some shelving inside the shelter on the green to house a community book swap. Potentially some solar lighting inside could make it more pleasant to use?



Fair Green Bus Shelter

Benches

Additional benches in the new playground are definitely on our wish list and maybe a bench by the swings on the green. Are there any other locations around the village which would benefit from a new bench?

Reach Port

The Environment Agency and GOBA (Great Ouse Boating Association) are considering desilting the lode to improve the flow and maintain access for boats. Alongside this work, it has been suggested that the area which is signed as Reach Port could benefit from some maintenance. The willow tree needs a trim to enable the views from the benches to be appreciated and the scrub and brambles could be cleared to turn this area into a really lovely spot to be enjoyed.



Please do get in touch with your thoughts – I look forward to hearing your suggestions!

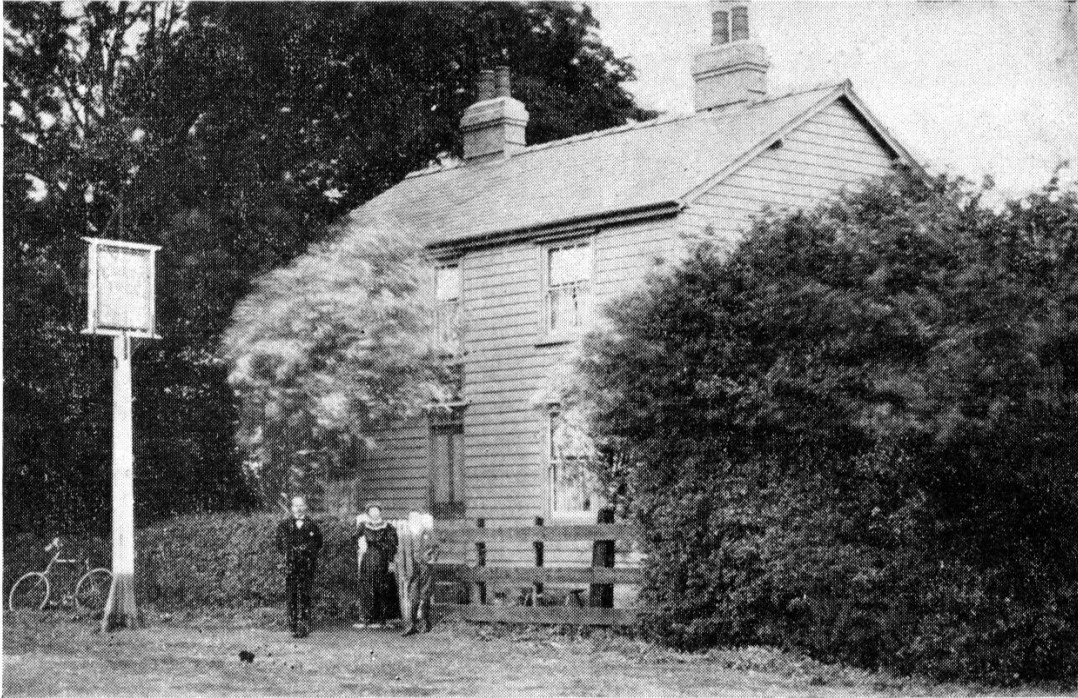
Alex de Giorgio-Miller

Play Spaces Officer – Reach Parish Council+
a.degiorgiomiller@reachparishcouncil.org

A few to start with from the Editor

- Get our phone box repaired/repainted and then find additional uses for it?
- Take away the waste bin from by our War Memorial and reposition it appropriately
- Replace and reposition the War Memorial bench on the Green?
- Refurbish the War Memorial surrounds to minimise weed growth and then regularly maintain it?
- I would suggest that an organised walk around the village by a small team would identify a lot more improvement opportunities

An Article reproduced from the East Anglian dated April 1958 –
grateful thanks go to Nick Acklam



The Cherry Tree at Swaffham Fen

THE LOST INNS OF SWAFFHAM FEN

By K. STEVENS HINDE

I TELL of fenmen and inns of bygone times and of the Upware district, well-known but little frequented. Upware is a tiny hamlet on the banks of the River Cam, 10 miles from Cambridge. Last year Upware lost its famous inn, the *Lord Nelson*, better known by the slogan on its wall—'Five Miles from Anywhere: No Hurry'. It was this blow which brought forth the host of memories of old fen inns which moved me to write of houses I cannot visit and times I have not known.

I was sitting in the *Maid's Head* at Wicken when William George Barnes, until recently Wicken Fen Keeper, told me that the *Lord Nelson* was but the last and most famous of a string of public houses in Swaffham district.

Stories of the *Lord Nelson* itself have already been told by writers on the fens like Dr. Lucas, Dr. E. A. R. Ennion, and Mr. J. Wentworth Day. Its old thatched roof had been covered with red corrugated iron in 1895, making it, with its whitewashed walls, visible for miles

The Lost Inns of Swaffham Fen



Five pubs were gathered round Waterbeach Green where now stand but two, the 'Sun' (above left), and the 'Bridge Hotel'. At Wicken only the 'Maid's Head' remains.

around. 'Five Miles from Anywhere'—the claim of its slogan was justified, yet the very loneliness of its site and the charm of its surroundings had drawn custom from all round the district.

As long ago as 1795, a young Cambridge undergraduate, John D'Oyly, of Corpus Christi College, noted his use of Upware Inn as a headquarters for shooting. In the mid-nineteenth century it was the meeting-place of the Upware Republic, an undergraduate club of sportsmen and drinkers, whose activities were first recorded by Arthur Gray in his 'Cambridge Revisited'. In the 1870s, a graduate named Richard Ramsay Fielden took up residence, calling himself 'King of Upware', and fought and drank there for many years.

Fifty years ago, the busy river with its tugs and pleasure boats, the bygone industries of coprolite and turf digging, the sport provided by the unreclaimed land, the naturalists' preserve at Wicken Fen, all contributed to make the *Lord Nelson* a prosperous house. And if trade had dwindled by the time that it was gutted by fire in October, 1956, it

was not because of competition; for this had disappeared completely.

At the turn of the century, Mr. Barnes told me, you could not walk a couple of miles in that part of the fens without being able to buy a drink. Now it is 'dry' from Clayhithe to Wicken, from Reach to Chittering.

I heard about the five pubs gathered round Waterbeach Green alone, where now stand but two; and of the old men who came early in the morning with a halfpenny 'latch-lifter', which secured them the first half of bitter, after which they accepted drinks from the farmers who came in for the rest of the day.

SWAFFHAM Fen starts at Bottisham Locks and there stood the *Green Man*, which was closed after the last War. Waterbeach Fen, on the other side of the River Cam, boasted only one pub along the river bank, the *Jolly Angler*, kept by Mr. Jackson, and the scene of much revelry. Crossing the river into Swaffham Fen, you came first to the *Sportsman*, half way to Swaffham Prior, then to the *Jolly Waterman* along the bank and

The Lost Inns of Swaffham Fen



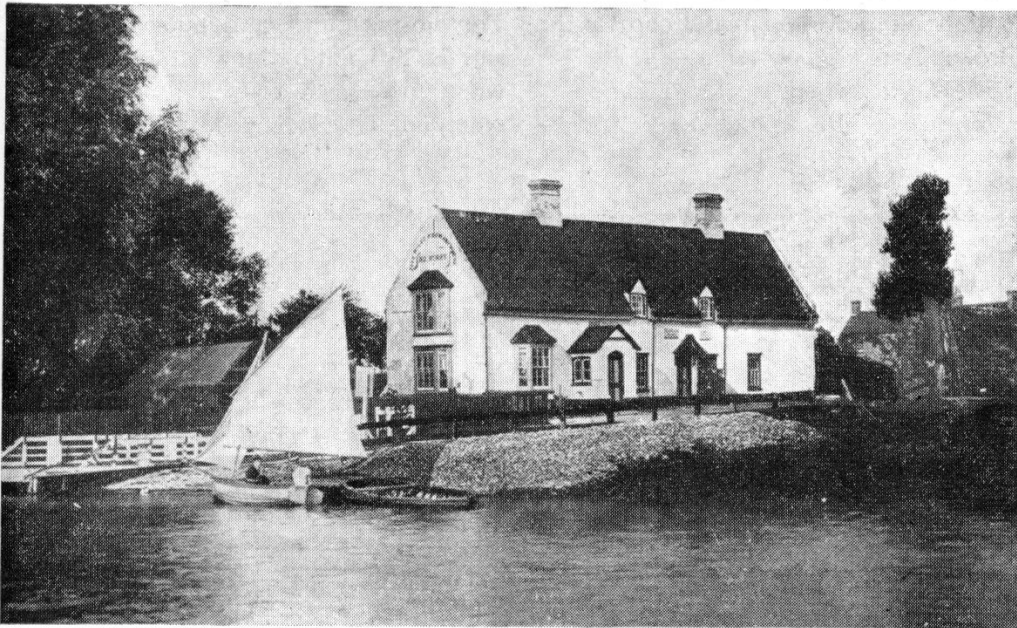
Reach has kept the 'Black Swan' and the 'White Horse' (above), but has lost the 'Black Eyed Susan' and 'Uncle Tom's Cabin'. Photos: Neville Newman

finally to the *Cherry Tree*, near the chapel.

At Upware itself, the *Anchor*, now a private house, was the favourite haunt of the bargees, being kept by Mr. Parr, a rough diamond himself apparently. Along the Reach Lode, at its junction

with Burwell Lode, in the midst of the unreclaimed Adventurers' Fen, a desolate land, pock-marked with turf diggings and with its ruined windpumps just showing above the unrestrained bushes, stood Pout Hall. Mr. Went-

The 'Lord Nelson' at Wicken was burnt down in 1956.



The Lost Inns of Swaffham Fen

worth Day vividly describes it as 'an old and picturesque house with a thatched roof and dormer windows. No wilder, more out-of-the-way place could be imagined than this old, secret house, with its black, tarred wooden walls, and little winking windows, just peering over the high river bank. It was built to serve as an inn, but the licence was refused, so the sheep-stealers made it their headquarters.'

Wicken itself has lost two of its three inns. The *Red Lion*, dating back to the 17th century, was closed in 1929, and the *Black Horse* in 1954. Only the 16th century *Maid's Head* survives, preserved from more than renovation, which is being carried out at the moment, by its status as an ancient monument.

Reach has managed to keep both the *White Horse* and the *Black Swan*. This tiny hamlet, whose only reminder of former days of size and prosperity is the Annual Fair opened by the Mayor and Corporation of Cambridge, used to boast four houses. The *Black Eyed Susan* and *Uncle Tom's Cabin* have gone.

In the *Black Swan* hangs a copy of the 'Broad Arrow' poem:

*The Lord Nelson
Five miles from Anywhere*

*To the Sun at Waterbeach
The Five Bells at Burwell
And the Black Swan at Reach.*

*Fordham's Green Dragon
Wicken's Maid's Head
Soham's Red Lion
The Broad Arrow spreads.*

Legend has it that this was the work of Richard Ramsay Fielden, 'King of Upware'. (It is probably a corrupt copy, as he fancied himself as a poet.) He is said to have painted a Broad Arrow on the wall of the inns he frequented as a guide to his friends. You can still see the Arrow at the *Maid's Head* and the *Black Swan*.

The fens have responded to the modern age. Road transport has replaced river traffic and has provided the means for the fen farmer either to live in the town or at least to seek his entertainment there. Today it is the townsman who seeks the charm of the countryside in a lonely inn; and Swaffham Fen is too far off the beaten track even for him. The closing of the last public house in this fen brought back memories of a time when most men sought company and entertainment locally.



THE EAM PRINTING SERVICE

is equipped and staffed to undertake most kinds of commercial, private and professional printing. It aims especially to cater for those who insist upon high quality work at reasonable prices.

IT Advice

Hello again, last issue I promised to cover Chromebooks, laptops and desktop computers, so here goes

Chromebooks

Chromebooks are laptops or convertibles that operate using Google Chrome, so they should be cheaper, lighter and simpler than a Windows or Apple laptop, whilst still having a proper keyboard and mouse. They function best with an internet connection, in which format they can be used for most normal duties, i.e. emails using G-Mail, browsing the internet, catch-up TV and streaming films. Google have an on-line office suite so that word processing and spreadsheets are available. Data storage is mostly through G-Drive and a 2 year subscription is included with the machine purchase.



If you want to play games, they are not suitable for anything other than simple ones like Patience. Chromebooks have become quite popular in educational circles and for people who enjoy their simplicity, lightness and long battery life. There are versions which provide storage off-line, i.e. when there is no internet connection, and many of the newer models will run Android apps, so it is possible to run Microsoft Office if you so desire, however they are not suitable for intensive photo or video editing.

Windows and Macintosh

Now we get into the realms of the Windows and Apple PC. Let's start with laptops since these tend to be the most popular format. I have covered the variations so let's look at the traditional screen and keyboard layout, these come in a great variety of sizes, specifications and prices, the latter varying from about £250 to £2,500 so how do we choose? Bear in mind that to a large extent the only way you can upgrade a laptop is by replacing it, so you need to choose carefully. In many homes a laptop sits in the corner of a room on a desk or table for much of the time, so size, weight and battery life are of limited importance compared to usability. Slim and light laptops look great, but those looks come at a price. Let's work through the items in a specification to decide on a machine.



Screen

A popular size is 15.6" (screens are measured diagonally) providing a reasonable working area with acceptable portability. A 13.5" screen suits people who carry their machine around a lot but can be restrictive in a home office situation and is more difficult to read. A 17" or larger screen leads to a bulkier machine but makes it possible to have more than one window open at the same time. I always strongly encourage my clients to buy a Full HD (high definition) screen for all but very basic use in preference to the older 1366 x 768 standard. They are more expensive but screens can't be upgraded retrospectively. Touchscreens are a matter of preference. If you always use a mouse with your laptop they are of limited use, but if you often use the touchpad then they make scrolling much easier, hence a mouse is not needed when travelling.

Keyboard

This may seem insignificant but if you use your keyboard a lot, one with a good 'feel' can make a big difference specially to touch typists. Also screen size influences key size and spacing. Decide at this stage whether you need a number pad, if the answer is "yes" then a screen of at least 15.6" becomes a necessity to fit it in.

Memory

This is a confusing area for the layman. There are 2 memory figures quoted in a specification: RAM and Storage. RAM is the area used by the computer to hold data that it is working with, e.g. open web pages, documents being edited, photos being viewed etc. 4GB is satisfactory but these days we tend to have lots of windows open specially when searching online for better deals, flights or holidays etc. so 8GB is to be preferred and often not much more expensive and leads to a quicker and more responsive computer.

Storage Memory is what used to be called the Hard Disc (HDD). These used to be a mechanical spinning disc which stored all your programs, Windows or Mac Operating System and files. An analogy would be that the Hard Disc is the filing cabinet and RAM is the desk. Mechanical Hard Discs are still found in some cheaper machines but have been superseded by Solid State Discs (SSD). These use silicon memory chips so there are no moving parts to fail, the result is a faster, more reliable component with a reduced power consumption leading to a computer which switches on faster and works faster, especially when switching between programs and windows. In common with most electronic devices SSD's used to be very expensive but their cost has fallen dramatically. Most people can get away with a 256 GB SSD comfortably and 128GB with care. For storage of large amounts of data, or if you run out of storage space then USB drives or 'Cloud' Storage like OneDrive, G-Drive and Dropbox can be used. If the budget runs to it a very cost-effective solution is an SSD for Windows and Programs, combined with an HDD for Data. This is a popular solution which exploits the speed of an SSD in loading many small files, whilst the HDD is cheaper and efficient loading large files like documents and video files.

Processor

This is the 'engine' of the computer which does the calculations and processing. If you regularly edit photos, videos or complex spreadsheets then this will have a considerable impact on performance and price. If it's just word processing and Internet browsing then it's less important.

Desktops

These are often overlooked but have some big advantages. You get a full-sized keyboard and mouse, the possibility of a larger screen, or even two screens, which makes it even easier to read more than one window, for instance if you are looking at bank statements while entering data in a spreadsheet. Being able to move the keyboard relative to the screen leads to a much better ergonomic layout, leading to less discomfort over long periods. Desktops also have the advantage that they are much easier and cheaper to upgrade if your requirements change over time. The improved cooling and ease of customisation also means that this is a better format for Gamers and specialist professional use.

All-in-Ones

These are big screens with a computer built in or attached to the back. They are neater, with less wires, especially if you have a wireless keyboard and mouse, but you still get the big screen. The main disadvantage is that they are more difficult to repair or upgrade. The same comments apply to very compact cases.

So there you are, I hope this article will help you to spend your money wisely and concentrate on the things that are important to you. Don't be in a rush and look round.

David McMillan
741259

Burwell & Reach Car Scheme

If you are unable to use conventional transport, the scheme can help you to travel from Reach or Burwell to:

*Chiropodists, Dentists, Doctors, Opticians,
Shops, Visit Friends . . .*

Transport cannot be provided for Hospital Outpatient Appointments

Contact hours are 8.30am to 5.00pm Monday to Friday – please give us 24 hours notice

01638 742543 (answerphone) and we will return your call

Reach Riders

Two events for you to enjoy . . .

SUNDAY 14TH APRIL

STAY SAFE RIDE

10:30AM
FAIR GREEN, REACH

MEET AT FAIR GREEN,
REACH
CB25 0JD
LOCAL RIDE RETURNING TO FAIR
GREEN, REACH AND DYKES END PH

ORGANISED BY
REACH RIDERS GROUP

Any Questions - Sue Cameron - 07879 627859

GRAHAM BUXTON LIVE AT

REACH VILLAGE CENTRE : SAT 4TH MAY

7:15 FOR 8 PM

GRAHAM Buxton
Singer • Songwriter • Since 1985

ALL PROCEEDS TO REACH RIDERS GROUP (24 ACRES)

Playing songs from Buddy Holly & the Beatles, to Adele and Ed Sheeran.

Winner of best vocalist 'Cambridge Band Competition'
"Graham honey tonsil's Buxton voice has the grit of Rod Stewart and the soul of Otis Reading"

facebook.com/grahambuxton
twitter.com/grahambuxton
soundcloud.com/grahambuxton

Graham Buxton isn't a one man band
...he's a one man festival
Cambridge press.

TICKETS £10 INCLUDING SUPPER - LICENSED BAR
CALL - SUE CAMERON- 07879 627859 - SADIE KING- 07881 022195

Sue Cameron

Events Team

My first shout out this month must go to the mini events team that organised the Family Bingo night. It was a fun filled evening and so lovely to see the little ones running their own tuck shop while the older ones got to grips with bingo names and numbers.



The children raised a grand total of £220 which has been donated to their chosen charities, Barnardos and Wood Green Animal Shelter.

We must also say a big Thank You to Tash who has chosen to step down from the Events Team, to focus on her young and busy family.

As a team we are trying to keep our focus on village events that encourage the wonderful community spirit we have here in Reach.

The team's aims are:

- To organise village events, now including Reach Fair
- To support villagers who have ideas for other events make them happen
- To keep a list of the village events on the website, so everyone knows what is going to happen and when.



We have a number of events planned, or which we are helping with:

Mon 6th May	Reach Fair
Sat 28th Sept	Macmillan Coffee Morning
October	Harvest Supper
Thurs 31st Oct	Halloween
Sun 1st Dec	Christmas tree lights switch on
Wed 11th Dec	Seniors Christmas lunch
December	Christingle service
Tues 24th Dec	Carols around the Christmas tree.

Reach Fair

Well it's April so that means the Fair is just around the corner and the team are full steam ahead with the planning. It's impossible to host this event without the help of all you in our wonderful village.

Special thanks go to those villagers who are our "Leaders":

1. Barbecue – Dan Mules and Ian Reinhardt
2. Bottle Stall – the Baileys and Redfarns
3. Car Park/Traffic Management – David Parr and Sue Elliott
4. Coconut Shy – Tony Jordan
5. Football Game – Cliff Parr
6. Information Tent – Debbie Quilter
7. Posters – Jacquie Lewis
8. Quiz – Ross Clark
9. Salad Stall – Clare Russell
10. Tea Tent – Claire Acklam
11. Tents – the Halls and Jordans
12. Village Games – Alex de Giorgio-Miller

But they can't do it on their own, so they will doubtless be in touch with other villagers to help out, or feel free to contact them and offer assistance.

We are pleased to be able to continue the newly reinstated tradition of giving May posies to the Mayor's party. We will be hosting a posy making session in the Village Centre the day before the fair. Watch the Facebook page and emails for timings.

We all look forward to another lovely Reach Fair day!

See the village website for details on all our 2019 events: <http://www.reach-village.co.uk/news.html>

Email: reacheventsteam@btinternet.com
Find us on Facebook too!

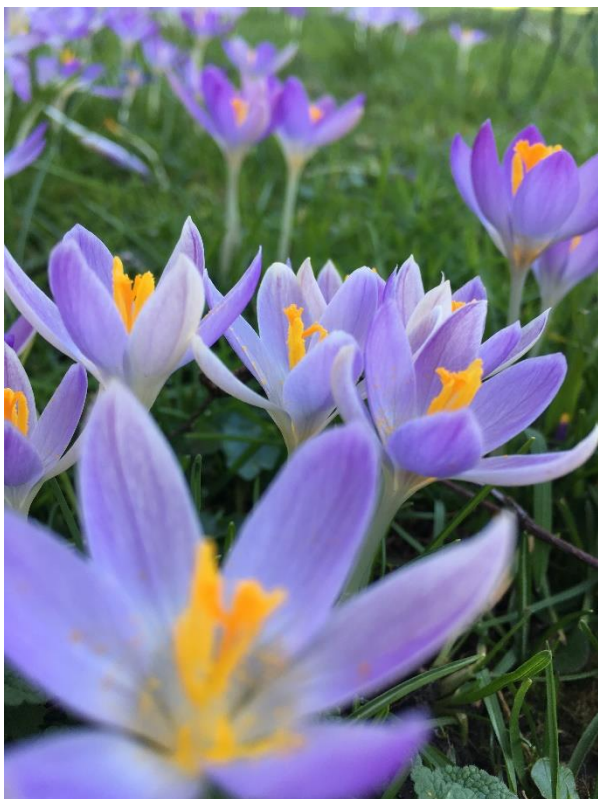
Debbie Quilter

Rosanna's Ramblings

Yet another year in which the transition into spring is full of stop-start confusion, hope and restrained despair! To be honest, I don't know why anyone in this country buys into the promise of any early spell of warm weather. Although it feels exciting at the time, we surely all know, really, that no good can come of it?



A friendly reader of my last column – the one in which I bemoaned the gloomy darkness of the relentless winter days – did comment to me that he'd read my piece and described it as "a catalogue of woes"! So perhaps I should make an attempt to be more cheery this time. I'll try, but I do find seasonal confusion more than a bit worrying to say the least.



Take the bulbs in our garden. A couple of weeks ago we had an unprecedented display of snowdrops, crocuses AND daffodils all jostling against each other with expressions on their faces showing consternation at the presence of unwelcome, and inappropriate, neighbours. Why on earth the snowdrops lasted quite so long considering the mildness of the winter is a mystery to me (my father's birthday was 23 January and as children we always used to gauge whether the signs of incipient spring were early or late by whether the snowdrops had shown themselves or not by then).

The poor crocuses hardly had their 'moment in the sun' at all before the sudden burst of April-like spring warmth in February (humph) saw them elbowed aside by the blowsy yellowness of the daffs.



Don't get me wrong, I absolutely love daffodils, particularly the dainty miniature ones waving their pretty little heads along the road verges in the late sunshine. But in their rightful time. And now, at the end of March, they are already looking rather jaded.

Gloom, gloom, gloom.

Well, not really. It's just a shame when the different extended moments in the passage of the seasons get squeezed like a concertina one into the other. There's no time to breathe, appreciate and relish. Only a quick glimpse, as of something spotted out of the window of a speeding train. It's frustrating.

Charles and I have spotted several chaps in recent days – days which have reverted to a much more wintry feel with a bitter wind chill making it necessary for me to resurrect my 'duvet coat' after I thought I'd done with it for the time being – out cycling WEARING SHORTS. Their legs have shown a rather alarming combination of bluishness and mottled redness. Their faces have betrayed a sense of dogged dismay. One can't help wondering whether the Spirit of April Fool is chuckling in the wings – "we've really pulled a fast one there, just look at what they're wearing!" We simply need to be patient, sit out this transition period, and hedge our bets a bit. There's absolutely no certainty that we won't have some frosts still (chance would be a fine thing), and all gardeners know that planting things out too early is a fool's game.

Still, it certainly brings joy to the heart to see the hedgerows starting to 'green up', and the other morning in the wood Charles encouraged me to pinch off a bit of tiny new hawthorn leaf and eat it ("bread & cheese" that used to be called, he says, when he was a child – although to me it tasted of ... well ... little fresh new leaves).



Which reminds me ... if any of you spot me in a couple of months staring at the lilac shrub in your front garden and then picking a tiny flower and eating it (they taste slightly sweet, slightly bitter, slightly fragrant), that's because my Russian grandmother taught me that to do so would bring good luck. She also made an infusion of Rosebay Willowherb to soothe inflamed skin. And my sister and I were regularly dosed with tincture of Valerian whenever emotionally churned-up – only in adulthood did we realize that Valium is synthesized from Valerian, so we were in fact rather sedated during adolescence. And we both ended up working as therapists – now, there's a thing!

It's funny how cultural differences play out down the generations. My first best friend at school was Polish, and she was taught how to knit, crochet and sew (as I was by said grandmother) in ways none of our 'English' schoolfriends were. In our early teens we were both creating patchwork blankets and making our own clothes – and just recently got together to sort through piles of yarn to choose the right wool for our respective charity knitting projects – mine a blanket destined for Ethiopia, hers woolly hats for homeless people.

We grew up eating similar food, though not the same – and Charles has had to get used to a certain Middle European nuance in my cookery. Though I can make proper roast dinners, and apple crumble, and Simnel cake, I more nostalgically gravitate towards yearning after the celebratory meals of my childhood. Maybe this year, finally, I'll replicate a proper Russian Easter meal if my children make it to Reach over the holidays. I'd like that.

Rosanna Moseley Gore

Bottisham and Burwell Photographic Club



The months of February and March have been extremely busy for our club. On the 12th February we enjoyed a visit from professional landscape photographer Justin Minns from Stowmarket who gave his digital lecture 'A Learning Curve'. Justin explained the practical and technical aspects of photographing the landscape and the wildlife.

For our Portrait Photography Workshop members were given the chance to try their skills at studio portraiture with lighting equipment and model provided by our member John Wilderspin, who led the evening. On 5th March we held our Projected Digital Image (PDI) Competition where members submit 3 digital images on any subject, judged by Andy Swain from Norwich. This was the last competition in our PDI League and the member with the most points gained during the season is awarded the Annual League Trophy which is presented at our Social Evening in May.

On the 12th March we enjoyed a digital presentation by Mrs Andrea Hargreaves from Selby, North Yorkshire. Andrea recently gained the highest award in amateur photography, Master of The Photographic Alliance of Gt. Britain (MPAGB) and showed us the prints that gained her the award, together with a selection of her photography.

As our season progresses, we have our final Print League Competition on the 19th March to be judged by Mrs Sue Dobson from Loughton Camera Club and a CD of Audio Visual sequences by the East Midlands Audio Visual Group, presented by their Honorary Secretary Mrs Jose Currant.

Members have submitted their work for the East Anglian Federation Annual Exhibition which officially opens at Wingfield Barns, Nr. Eye, Suffolk on the 4th May and continues until the 19th May. Judging takes place at the end of March when it will be known if any of our members have had their work accepted. There are 127 clubs in the East Anglian Federation and to gain an acceptance in the Annual exhibition is quite an achievement.

Our programme continues at Lode Chapel until the 7th May with the Roger Human Print Trophy and concludes with our Social Evening on the 10th May, when members meet at a local hostelry for our Annual Dinner and presentation of Cups and Trophies.

During the summer we look forward to our Club Outing to Oxford on the 9th June, when photographs taken during the day are entered for our competition "Taken on the Club Outing". Members enter 4 digital images for The Metcalfe Trophy, donated by our Chairman Gerry Metcalfe.

We meet every Tuesday evening at Lode Chapel from 7.30 pm to 9.30 pm and new members are always welcome. Visitors are welcomed for a small entrance fee of £3.00. Further details can be obtained from the Secretary, Mrs Daphne Hanson, Tele: 01638 741106, Email: hanson16@virginmedia.com or via our website: www.bottburpc.org.

Daphne Hanson
Hon Secretary

Burwell Museum Coach Trips



- **Langham Glass and Holt**
Wed 10th April - tickets £23
- **Clacton**
Thurs 6th June - tickets £20
- **Cromer Pier Show**
Wed 17th July - tickets £40
- **Southend**
Tues 13th August - tickets £20
- **Sheringham 40s Day**
15th Sept - tickets £19

Tickets on sale at Tina's North St Burwell or ring Barbara on 01638741581 or 07887712296.

CAR BOOT SALE

Burwell Village
College Car Park

**SATURDAY
11th MAY**

9 - 12.30
(Sellers from 8am)

A FUNDRAISING EVENT FOR BURWELL PRINT CENTRE

BACON
BUTTIES &
DRINKS
FOR SALE



BURWELL
PRINT
CENTRE

Pitches are £5 in advance or £7 on the day.
Book early to guarantee a pitch. Call Sue at
Burwell Print Centre on 01638 613102

Burwell Museum



Opening Weekend and Easter Egg Hunt

Burwell museum re-opens at Easter weekend, Sunday 21st April and Bank Holiday Monday 22nd April 2019 for our annual Easter Egg Hunt. Loads of family fun including chocolate prizes for all egg hunters, crafts, tombola and Easter treats in the tea room! Standard museum admission applies, season ticket holders and under 3s are free. Egg hunt entry is £1.

The museum will then be open every Thursday, Sunday and Bank Holiday Monday from Easter to October, 11.00-5.00. Last entry at 4.00. Prices are the same as last year, £4 for adults, £2 for children, £10 for a family (up to 2 adults and 4 children).

Your Museum needs you!

We're always looking for friendly, community-minded people of all ages to join our volunteer team – we're particularly keen to meet people who are happy to join our Sunday front of house team and/or to show visitors around the windmill. If you're interested and have some free time on Tuesdays, Thursdays or Sundays, give us a ring on 01638 605544 or email: volunteers@burwellmuseum.org.uk

National Mills Weekend 2019

As always, we'll be celebrating our largest artefact, Stevens' Mill, as part of National Mills Weekend on the 11th and 12th of May. Free entry to the mill and museum all weekend. Tour Burwell's only remaining windmill, meet the mill team and find out more about the history of our mill through photographs. At the museum, enjoy stalls, live music and home-made cake.

Holiday activities

As usual, the Thursday of May Half term (Thursday 30 May) will be a hive of activity at the museum. This year our museum activities will be looking at the amazing materials which make up our museum collections, starting with bone. We're teaming up with the Museum of Zoology and the Museum of Archaeology and Anthropology in Cambridge to look at what bones can tell us about how Burwell has changed over the years. 1.30-4.30pm, standard museum admission applies.

Web: www.burwellmuseum.org.uk
Email: museum@burwellmuseum.org.uk
Tel: 01638 605544
Address:
Burwell Museum
Mill Close, Burwell CB25 0HL

Arthur Rank Hospice

Eileen Milner's Jumble Sale – Saturday 27 April: looking for a bargain?

11am at Barnwell Baptist Church.

The Big Shiver – Friday 10 May: give outdoor swimming a try!

The Big Shiver returns to the Jesus Green Lido in Cambridge, with participants taking a dip in Europe's biggest outdoor pool before it opens to the public. Entry fee £15 with sponsorship encouraged. More details at arhc.orh.uk/the-big-shiver

Star Shine Night Walk – Saturday 18 May: a special memory walk with an 80s twist!



Grab your torches, dust off your crimpers and find your neon leggings! We are winding the clock back and adding some Saturday night fever to our annual memory walk!

Gather your friends and family and decide on the 6.5 or 10 mile option. Starting at 8pm from Shelford Rugby Club. Register now at starshinenightwalk.co.uk or call 01223 675888.

Tea at Three – Monday 20 – Saturday 26 May: hold a tea party!

Decide on a date, time and location to suit you. It could be tea and cake, a coffee break at work or G&T with friends! Simply supply the refreshments and invite your guests to make a donation. Let us know your plans and we will send you a pack with posters, invites, fundraising tips and lots more. Visit arhc.org.uk/teaatthree or call 01223 675888.

Alison Pinney

Fundraising Officer at Arthur Rank Hospice Charity
01223 675888.

Cambridgeshire Fire and Rescue Service



CAMBRIDGESHIRE
FIRE & RESCUE SERVICE
presoffice@cambsfire.gov.uk
www.cambsfire.gov.uk

PREVENTING PROTECTING RESPONDING

- Do you own or run a business locally?
- Have you taken the steps you need to in order to protect the business from fire?
- Would you like to come along and hear from a Fire Protection Officer to find out more about keeping your business in business?
- Would you like the help you need to build a FREE risk assessment for your business?

Sign up today for a FREE business seminar with Cambridgeshire Fire and Rescue Service.

On average there are 165 fires in business premises each year with many of those businesses not going on to trade again. Attending a FREE Business Seminar can help you to get the support you need to keep your business safe from fire and to ensure those working there are protected.

We are determined to support and inform business owners across Cambridgeshire and Peterborough on fire safety legislation and to help you put together a FREE Fire Risk Assessment to help you to protect your business from fire.

Whether your business runs out of a small industrial unit, is a side-street coffee shop or a licensed premise, our FREE workshops will help you to understand important legislation and build a comprehensive risk assessment to protect you and your business. Our seminars run across the county in various locations and can additionally be arranged ad-hoc to requirements wherever possible.

Contact us today – For more information on upcoming seminars or to book a place contact us on: 01480 444 500 or online at www.cambsfire.gov.uk.

Out and About Winter/Spring 2019

February and March delivered strange weather, a few unseasonably warm days followed by wild winds for almost a fortnight. The tree on our Great Lane track rained down lichen-covered branches and I lost armfuls of pony hay across the fen. Martin mutters climate change, darkly.



Throughout Reach the cheerful yellows of spring raised spirits - daffodils, primroses, winter aconites, celandines and fluttering brimstone butterflies. Goldfinches and yellowhammers colour the hedgerows.



Brimstone Butterfly

I learn that all daffodils are narcissi but not all narcissi are daffodils. I admire their resilience, snow or frost may flatten stems but, once the temperatures rise they pick themselves up again. There's a lovely primrose-coloured narcissus called Sailboat, whose slightly windswept petals flutter like sails in the breeze.



Roe Deer

The village outskirts teem with wildlife, graceful roe deer, muntjac, foxes, pheasants, hares, partridge, birds of prey. Diana Ward pointed out the signs of badger paths crossing Great Lane. On a more domestic note, Ron's spring lambs bleat and frolic around their pasture in sunshine, another welcome sight.

Reach village resounds with the calls of songbirds during the day, the honking of geese at dusk and owl cries throughout the night.

Lapwings and fieldfares dot the land, black headed gulls are ever present, these intelligent birds are fiercely protective of their young. Herons sit, hunch-shouldered, in the fields bordering Little Fen Drove. A small starling murmuration can be seen at dusk above the Tubney bird hide. Twig nests are obvious in the branches of skeleton winter trees. Rooks are early sitters so they can hatch their young in time to feed them on the eggs and chicks of songbirds.

The rabbit is a rarer sighting, their numbers have declined by 48%, this significant loss has been attributed to virus and predators. These ancient creatures were introduced to England (from Spain and France) in the 12th century AD by the Normans. During territorial disputes they, too, box with their front limbs.



Red Kite

I spotted a red kite above Churchfield farm on the Burwell Road, and twice at the same time of day (9.10am) above Gareth and Lesley's Reach Wood-side field in mid March. They're still an uncommon sight in this area, unlike the daily buzzard. I was surprised to spy four kestrels on the short road to Upware recently. Despite our abundant village birdlife, I read in Country Life's March issue that 50 years ago there were 40 million more birds in the UK than there are today, which is sad and disturbing.

Early ladybirds move around wooden fenceposts to catch the sun's warmth and bumble bees hum nearby. Peacock butterflies have been awakened from hibernation by the unusual early warmth, daytime temperatures of 13 - 17°C-plus are required to stimulate them into action. Balmy evenings also encourage moths to fly. Despite insects being near the bottom of our food chain nearly all creatures rely on them for pollination, protein and recycling. All wild birds are dependent on insects.

Ron mentioned there was no frogspawn in his field pond this year. Nor could I find the usual long ribbons of toadspawn in Tubney's fen ditches. I learn that evaporating ponds and puddles cause tadpoles and froglets to be marooned, providing easy meals for both badgers and foxes. Common toads begin their annual migration to breeding ponds as early as February in a mild year, many are known to use the same sites as their ancestors.



Toad Spawn

I looked for the pike which often lurked in the watery shallows below Reach port bridge. There was no sign, perhaps the enthusiastic young fishermen caught him after all. I read that the Board of Agriculture & Fisheries have taken steps towards stocking suitable waters with eels.

Contributions:

Claire Halpin: Sun 17 Mar - The swan finished re-building her nest and is now sitting. That said, she is prone to hopping on and off the nest and is not quite settled. The male swan assisted with the nest building, and is often closeby.

Nick Acklam:- Here's what I have seen since early January. No further otter sightings but I am not getting out on to the Fen pre-dawn. Another sighting of cranes though:

9 January: a Painted Lady butterfly found on an inside window ledge - a relic of last summer on a bitterly cold day.

12 January: Two jackdaws inspecting the interior of the nest box we installed on the chimney stack last summer. A promising sign.

21 January: Twenty Greylag geese grazing on Tubney Fen, the first such flock seen this winter. Handfuls of Redshank in the rank grass at the northerly end of Tubney. Their numbers seem to be increasing here.

24 January: A skulk of three foxes on the field adjacent to the avenue of willows and Old Bar Drove. All were short legged, light brown and quite relaxed about our approach from downwind until they sighted the dog.

27 January: A few skylarks singing high in the clear, cold air above Tubney Fen.

30 January: Late afternoon, a Barn Owl methodically quarters the 24 Acres woodland before dropping onto a vole in the surrounding grassland, picking it up and flying back into the scrub by the shipping container, presumably to eat it.

31 January: A hard frost overnight. 40 or so Greylag geese stand on the frozen surface of Tubney Mere. They are joined by a few others as we watch. The landings on the ice are comical. Large numbers of Mallard, Shoveller and a few Coot are also present. A tiny area of open water is occupied by a pair of Mute Swans. Seven hares spotted nearby during the walk including a cluster of five, possibly a sign of early mating activity.

4 February: A Short-eared Owl rises from the long grass fringing the avenue of willows that fringes the south east edge of Tubney. It flew up from almost under our feet, the mottling of the feathers and the length and narrowness of the wings being very evident. A Barn Owl, probably the same bird as seen the previous week, systematically hunts on and around the 24 Acres. It is active but unsuccessful for over half an hour.

6 February: Forty or so Greylag geese grazing on Tubney Fen. A pair of Buzzards, perched on fence posts in the centre of the fen, glide off as we near, dropping into the drainage ditch and disappearing from view before reappearing and perching further down the fence line.

7 February: A flock of Fieldfares fly directly into a strong south westerly wind. Most of their movement appears vertical and, in combination, they remind me of a fairground carousel.

11 February: Goose numbers on the fen have increased rapidly overnight. A loose skein of 26 Greylag flies into the mere from the east. A further 15 land on the turf nearby from the north. A mixed group of about 15 Greylag and Canada geese already occupy the cow pond in the centre of the fen. Overhead and at considerable height two cranes fly north towards Burwell Fen, calling to each other as they go.

12 February: A woodpecker drums in the vicinity of Great Lane. On the bank of the cow pond on Tubney lies a freshly killed Black-headed gull. Its head has disappeared but it is otherwise untouched.

25 February: A Brimstone butterfly and red leg bumblebees active in the garden as the temperature reaches 19C.

26 February: Three Roe deer are laid up in the 24 Acres woodland, the first that I have seen there for some time. Numbers of Roe deer around Reach seem lower than last year.

5 and 18 March: Marsh harriers seen flying into Burwell Fen from surrounding land.

5, 8 and 18 March: Mute swans in pairs and small groups fly into Tubney often at quite low level.

11 March: A pair of Lapwings show complete mastery of the blustery north westerly wind, engaging in swooping figure of eight courtship flight.

17 March: A Sparrowhawk is mobbed by a flock of finches over Fair Green.

Joss Goodchild
jossbmg@icloud.com

Wicken Fen and Anglesey Abbey

Our summer migrants have steadily been arriving back at the Fen over the past few weeks and are busy staking a territory, attracting a mate and getting on with the important task of raising the next generation. We're expecting the return of the cuckoo towards the end of April and look forward to hearing its familiar call on the reserve.



Reed warbler with cuckoo chick by Richard Nicoll

One of the true highlights of the natural world at this time of year is the dawn chorus. If you're up for an early start (4.45am), our Countryside Manager, Martin Lester, will be leading a **Dawn Chorus Walk** on Saturday 4 May.

This event kicks off our **Big Vision Weekend** (4 to 6 May), when we'll be celebrating two important anniversaries: 120 years since the National Trust bought its first two acres at Wicken Fen, and 20 years since the launch of the Wicken Fen Vision.

There will be lots of great activities to enjoy over the weekend, including: the Big Vision Treasure Hunt, special Anniversary Boat Trip and Safari, pond dipping, storytelling, face painting, Vision Safari ranger led walks and much more! Keep an eye on our social media and website for more details.

We'll be running **Cadbury's Easter Egg Trails** over the Easter Bank Holiday Weekend, Friday 22 – Monday 25 April. Trails are £2.50 per child (normal admission applies). Drop in at any time over the weekend to look for clues on the trail and find out more about the wonderful wildlife at Wicken Fen and in your garden at home, and how we can help creatures great and small.

Children's events at Wicken over the Easter school holidays include: **Pond Dipping** on 10 & 15 April (age 5+), **Story Time: Blackbird, Blackbird** on Tuesday 9 April (age 2-7), **Spring into Spring: Eggs and Nests** on 11 & 12 April (age 4+), **Spring into Spring: Baby Paws and Claws** on 16 & 17 April (age 4+). We'll also be offering drop in activities throughout the holidays.

For the May half-term holiday the menu at Wicken includes **Pond Dipping** on Tuesday 28 May (age 5+), **Cuckoos Calling** (age 5+) on Wednesday 29 May and **Tracks, Pools, and Animal Clues** (age 4+) on Friday 31 May.

Our programme of adult events continues with a **Willow Basket Making Workshop** on Friday 26 April, and another of our anniversary celebration events, **Cuckoos and Curious Naturalists** on Friday 10 May. This is a chance to hear local Behavioural Ecologist Professor Nick Davies tell stories from the field of cuckoos, warblers and the naturalists who became interested in them.

Advance booking is essential for all events at Wicken Fen. Full details and ticketing information can be found in the 'What's On' section of our website: www.nationaltrust.org.uk/wicken-fen

Julia Hammond

Car of the Month April 1958

CAR OF THE MONTH

The Ford Prefect De Luxe



By our Motoring Correspondent

FORDS have always given the motorist excellent value for money and the latest model of the Prefect De Luxe is no exception. They offer, at a very competitive price, a larger engine and a more roomy body than most of their rivals.

The Prefect has a great selling point in its sturdiness and reliability. It has built up a reputation for this but it has far more to offer, as a trial quickly proves.

One's first impression of the car is that it is smart—the interior particularly so. There is a pleasant sensation of spaciousness when one is sitting in it. In the driving position one has the feeling of sitting fairly high and this gives an excellent sense of control.

When one first drives the car, one rapidly appreciates its performance too. The 1172 c.c. engine is eager and willing. Its compression ratio of 7 to 1 means that it will operate happily on commercial fuel.

Acceleration is more than satisfactory. One can get away quickly in traffic and maintain quite a high cruising speed for mile after mile whenever traffic conditions permit. Indeed, one of the most impressive things about the car is the feeling one has that it will go on and on and on. A floor gear lever operates the excellent three speed gearbox smoothly and cleanly. There have always been heated arguments as to whether a three speed gearbox is the best answer for a small car and opinion is sharply divided. Suffice it to say that the Prefect does all that is asked of it.

The turning circle is good—only 34 feet—which makes the car handy and manoeuvrable. Parking is delightfully easy.

The ride is comfortable, though a trifle hard and with some sway if no passengers are carried.

The internal layout is neat and unflashy with no distracting blaze of chromium.

This applies to the exterior as well, the window surrounds being of stainless steel. Perhaps manufacturers are now beginning to discover what any car owner could have told them—that however exciting chromium looks when it is new, it very soon tends to get tired and more than shows its age after a couple of years.

There is a magnificent glove compartment, the deepest I have ever seen in a car of this size—and fitted with a lock too.

A useful fitting is the foot rest beside the accelerator pedal. Another minor feature worth mentioning is that the instrument lights, though operated by the same switch as the sidelights, can be switched off if not required. This is by no means the common practice it should be.

The trafficators make a loud ticking noise when turned on, so that one cannot overlook them. This is a good point. They also flash a bright orange light on the dashboard—unexceptionable during the day but, in the car I tried, throwing a distracting glare on the windscreen at night. I believe modification plans of this are in hand.

Before you take delivery of the car, be sure to ask your dealer how to open the bonnet. I shall not reveal the answer here because, as with detective stories, some readers may like to spend half an hour trying to work it out for themselves. After that, they can ring up a garage and ask, as I had to.

The driver's seat in the car tested creaked abominably. This was no doubt a minor manufacturing fault and does not detract from the general impression one gains of a lively, comfortable and robust small car.

The Ford Prefect De Luxe, £658 7s., incl. P.T.

ix

Tales from a Reach Garden

I am writing this on a warm and sunny afternoon in March. Spring has started and it feels like summer, although this summery weather is unlikely to last. The last couple of months have been mild and very windy at times. Local woodland birds have been busy at the feeders in the garden - when the wind drops - and are looking for suitable nesting sites in the hedges.



The snowdrops have flowered and gone to seed. The daffodils have been flowering for a few weeks, but many have faded now and need dead-heading. The hyacinths are in full bloom and their gorgeous scent fills the air. The hellebores have been in flower since January and are looking lovely even now. The long, fat leaves of tulips have emerged from the ground with their flowers which are still green and closed up, but ready to dazzle with their brilliant colour within a couple of weeks.



Hyacinths in mid March

Clumps of dead nettles are flowering too and weeds of many sorts are emerging and flowering everywhere in the garden. March is usually busy with seeds to be sown and planting to be done but seems especially so this year, thanks to the extra weeding.

Also emerging since the end of February are spears of broccoli which were probably brought on by the warm weather we had back then. The broccoli plants look strong and healthy and less bedraggled than usual in spite of the strong winds we had recently.

Now that the spears are ready for picking, I'll be cutting the succulent, purple clusters with their tender leaves regularly to encourage more spears to be produced and to prevent the yellow flowers from forming. This will probably continue through to the end of May when the stems will be much thinner and the clusters much smaller; by then the plant will be so desperate to flower, the yellow-petalled flowers will develop almost immediately and go to seed very quickly too.

However, the mild weather has protected adult cabbage whitefly over winter and they have made their presence felt. Every broccoli spear that was harvested yesterday afternoon was accompanied by a small cloud of whitefly. Whitefly are not easy to control outdoors and will be laying eggs on the underside of cabbage, kale and broccoli leaves fairly soon. The baby whitefly (technically speaking, they are nymphs) will suck the sap of leaves as they grow and secrete a sticky honeydew which attracts fungal moulds that can damage leaves and weaken plants. It's best to remove badly damaged leaves as soon as they are spotted to help prevent any infestation from spreading.

I've learnt recently that a car vacuum cleaner, (or a small vacuum cleaner with a fine nozzle) is quite useful for removing adult whitefly, so I'll probably invest in one of those soon. The vacuumed whitefly should be sealed in a bag and placed in a freezer for a couple of days, to ensure they are dead before being binned. In any case, to help prevent more cycles of whitefly emerging later in the year the leaves of cabbages, kale, broccoli etc., should either be buried in a trench covered with a thick layer of soil (where they will compost slowly once the cropping has finished), or burnt; or fed to chickens who'll be glad of the extra protein.



Broccoli spears growing in the spring sunshine

I do enjoy this time of year in spite of all the work that's involved in the garden. It's the sense of potential when sowing seeds and watching seedlings emerge and flourish, eventually providing food for the table later in the year. Nevertheless, as the whitefly has shown, you need to be vigilant and act on the pests quickly, or learn to live with them.

Danuta Gibson

Burwell Bowls Club



Burwell Bowls section of the Ex Service and Social Club are looking for new members - so if you fancy bowls (any age is welcome) you can go along on a Tuesday evening at 6.15 pm and have a try or alternatively call Peter Green, chairman and secretary to have a chat.

Although bowls has an unfortunate reputation amongst many as an old person's game, in fact the leading players are mostly young! Peter recommends it is a game that you can take up in teenage years and carry on through to your 70's and 80's as it requires considerable skill but only modest physical fitness.

If any individuals or groups are interested in organising an evening try out, please call Peter Green to discuss on 01638 742665. These are great facilities right in the middle of Burwell – social activity right on your doorstep!

Peter Green



Bottisham Village College Adult Learning

New evening Courses starting after Easter:

**Cookery: A Taste of Italian
Spring on the Table**

**Design your Own Garden
Digital Photography**

**Floristry: Cut Flowers for
Summer**

Introduction to Counselling

Prepare for Maths GCSE (Free)*

***(for those intending to enrol on our
Maths GCSE for Adults in September)**

Saturday Workshops

18th May:

Cook with your Kids

Creative Writing – Flash Fiction

Cookery: Indian Stuffed Breads

Dichloric Glass Jewellery

Skin Care to Make-Up

Vibrant Inks and Pen Drawings

for Landscapes

Yoga Workshop

**Our full range of courses is
available on our website:**

www.bottishamvc.org/adultlearning

**Tel: 01223 811372 email:
adultlearning@bottishamvc.org**

Food Focus



Help!

How do two months pass so quickly and I'm struggling once again for something interesting and delicious to write about that I can actually recommend?

This month I'm going to fall back on a curry recipe of Nigel Slater's that has become a reasonably regular favourite in our house. It's from his satisfyingly chunky and beautiful book "eat", where the aim is fast and tasty meals. I'm rather proud of my adaptation too, which somewhat inevitably, came from necessity but is far superior in texture, seasonality and flavour, so Nigel if you're reading...take note!

Prawns, lemongrass and coconut

For 2 - vivid flavours, a little heat. Uplifting and energising. (Nigel's words not mine).



Ingredients

Prawns (I haven't tried but think this might work really well with paneer which you can buy easily now and has a similar texture to prawns), lemongrass, coconut milk, coriander, turmeric, garlic, bird's eye chillies, galangal or ginger, pak choi (or cauliflower – my superior adaptation!), mirin, fish sauce, lime, mint.

Recipe

Put 6 coriander stalks and roots, 2 teaspoons of ground turmeric, 2 large garlic cloves, 2 lemongrass stalks, 2 bird's eye chillies, 2 tablespoons of groundnut oil (I use rapeseed) and a thumb-sized knob of peeled galangal (no idea what this is even) or ginger in a food processor and reduce to a rough, loose paste. (This will make twice as much as you need – so I freeze the rest making dinner on another night extra speedy).

Put half the paste in a pan, fry for a couple of minutes, stirring regularly, then add a 400ml can of coconut milk, a head of pak choi or the appropriate amount of cauliflower, cut into large bite-sized pieces, and 8-10 shelled large, raw prawns (or paneer). Bring to the boil and simmer for a few minutes, till the prawns turn opaque. Finish with 2 teaspoons of mirin, a tablespoon of fish sauce and the juice of a lime, or to taste. Stir in the leaves from the coriander and top with a few mint leaves.

Ps Foody Markets & Events happening near you over the next two months

Burwell Farmers Market (Burwell Village College) 2nd Saturday of the month (9.30 - 12.30) – April 13th & May 11th.

Ely Farmers Market 2nd and 4th Saturday of the month (8.30 - 2) April 13th & 27th, and May 11th & 25th.

Stretham Feast – weekend of 18th – 19th May. 18th Farmers market with Wicken Coronation band playing 9-1, around village cross, and chance to buy fresh local seasonal produce at low cost. 19th – Feast Day Parade and Fair.

Elys Eel Festival (3rd – 6th May 10-5 each day). With Eel Day, a Food Safari and the Food & Drink Festival – a jam packed four day programme.

Eat Cambridge – Main Event 11th May followed by 2 weeks of fringe events until 26th May Eat Cambridge is an annual food and drink festival showcasing Cambridgeshire's delicious independent food scene. The festival was founded in 2013 by three local food lovers and is organised and run entirely by volunteers.

Catherine Gibson

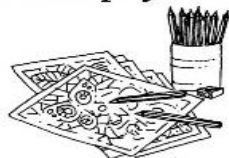


Letter from the Vicarage

How is Lent going for you? Lent is the ancient season of preparation for Easter, and many people still mark it in some way. Life can get very busy and noisy, and a common practice during Lent is to take time out for prayer and reflection. We are organising a 'quiet morning', in Reach on Saturday 6th April, meeting in the village centre, and using the church and the surrounding countryside to 'create and pray'.



*– Create and Pray in Lent –
space and time to pray and listen to God*



**You are invited to
a Quiet Morning
on Saturday 6 April 2019
10 am to 12 noon
at Reach Village Centre**
**Some craft materials and colouring pictures
will be provided,
or bring your own materials
or colouring mediums to use**
Drinks available
**Please email vicar@stmarysburwell.org.uk
if you plan to come (to help with planning)**

This is open to anyone, to have some space and time to pray and listen to God. Do get in touch if you'd like more information.

Many people give up something for Lent, like alcohol or chocolate, as the 40 days gives a short enough time for it to feel do-able, but is long enough to make a difference. I've been motivated this year by 'Plastic-Less' Lent - a challenge to reduce the use of plastics. It's such an important area for all of us, not just during Lent. Perhaps it's something you could join me in? Later on in May, Christian Aid week will focus on climate change, and this will be the focus for the joint service between Trinity Church and St Mary's, to be held at St Mary's at 10am on Sunday 12th May, and all are welcome.

As Easter is very late, it will be at the end of the school holidays, and we have several events specifically for children and families. In Holy Week itself, we have a Candlelit Night Prayer service in Reach on Wednesday 17th, and then the traditional Good Friday hour at the cross reflection from 2 - 3pm. For children, young people and families, Refresh Café will continue in St Mary's each Friday morning during the holidays, for babies, toddlers and their grow-ups, and Messy Church will be meeting on Good Friday morning at St Mary's from 10.30am. For updates, please see our Facebook pages. Please get in touch if you would like more information about these or any of our events or services, including weddings, christenings and baby thanksgivings, or if you would like would value an opportunity to chat.

Finally, both St Mary's church and CentrePeace act as collection points during the day for donations for the Foodbank, if you would like to contribute. If you find yourself in need of the support of the Foodbank, I do have emergency vouchers, or you can contact Ely Foodbank on 01353 468626.

Revd Dr Eleanor Williams
Vicar of Burwell with Reach,
01638 741262
vicar@stmarysburwell.org.uk

Reach Church Update

Over the winter, there has been a great deal of activity on trying to finalise the plans for the developments of Reach church. The current situation is as follows:

The draft plans were reviewed to consider incorporating some suggestions and amendments made by the Diocesan Advisory Committee and by the PCC. One of the key issues discussed was the heating. The original plans included oil-fired underfloor heating with radiators to provide a boost, but the PCC preferred a 'greener' option, in line with the general policy of the Church of England. After investigating the possibilities and seeking further expert advice, we decided that electric heating would be our preferred option, since the availability of 'green' sources of electricity are increasing. We have established that this is technically feasible and that the running costs would be affordable. Various combinations of electric underfloor heating, electric panel radiators and radiant or infra-red heaters should provide both background heat and a boost when needed. The PCC will make the final decision on exactly what type of heaters to use at its meeting at the end of March.

In the latest version of the plans, the position of the servery and WC is reversed to make best use of the space. The servery is small, but includes an oven/hob, fridge and dishwasher, as well as storage cupboards and work space for a kettle, toaster and microwave.

The architects have now obtained detailed costing estimates from a Quantity Surveyor, which proved to be rather more than was anticipated.

We therefore re-visited the whole scheme to come up with something that still incorporates what we want while not breaking the budget. This means having a new wooden one, rather than a stone floor; modifying the specifications for lighting, audiovisual and other ancillary fittings and delaying some items to form a 'phase 2' which can be done if there are sufficient funds after the main project is complete and VAT has been reclaimed.

The next stage will be to consult various advisory bodies like Historic England and the Victorian Society before making the final application for a faculty (the Church of England's equivalent of planning permission.)

Pat Chalmers

'**Merry in Maytime**' is a new exhibition from the Museum of Cambridge, investigating folk customs of Cambridgeshire people around the month of May. The exhibition includes original artefacts from our Museum, oral histories and local stories, photographs of seasonal celebrations and a specially sung traditional Cambridgeshire May Carol. Cambridgeshire is rich in traditional celebrations; this exhibition explores the origins and development of May Day, the curious custom of Beating the Bounds and the life and costume involved with Jack in the Green May processions.

This exhibition is coming out to you. It will be in residence for ONE WEEK ONLY at St. Mary's Church, Burwell from the Monday 22nd - Sunday 28th April. A launch event will take place at the church on Monday 22nd from 6:30-7:30pm.



Reach Riders



The Reach Riders Group Committee consists of:

Sadie King (Chair)
 Sue Cameron (Secretary)
 Claire Halpin
 Gemma Rolfe
 Liz Tabecki

Anyone interested in joining should contact Sue Cameron for a membership form, terms and conditions and disclaimer. Email ewenandsue@btinternet.com or Tel 07879 627859

Know Your Parish Council

Your councillors are:

Nathan Bridgeman	Councillor	07525 950568
Charlotte Cane	Chair	741064
Alex de Giorgio-Miller	Councillor	07771 348013
Hilary Fielding	Vice Chair	741853
David McMillan	Councillor	741259
Andrew Trump	Councillor	07980 955490
Diana Ward	Councillor	744210
Allan Alderson	District Councillor	741744
Joshua Schumann	County Councillor	

Your Clerk is Susan Bailey
 29 Great Lane Reach CB25 0JF; 01638 743794
 clerk@reachparishcouncil.org

Meetings take place in the Village Centre on the first Wednesday of each month. They start at 7.30pm and all Reach villagers are welcome to attend.

Reach Grant Fund

The Grant Fund replaces the Amenity Fund and exists to fund community activities in Reach.

Application forms should be downloaded from:
www.reach-village.co.uk/grant_fund.html
 completed and then sent to Susan Bailey – contact details are above.

Parish Council Meeting Minutes

Minutes of Reach Parish Council meeting held on: Wednesday 6th February 2019

Attendance

Charlotte Cane	Chair	Present
Hilary Fielding	Vice Chair	Present
Alex de Giorgio-Miller	Councillor	Present
Diana Ward	Councillor	Not Present
Andrew Trump	Councillor	Present
David McMillan	Councillor	Present
Nathan Bridgeman	Councillor	Present
Susan Bailey	Clerk	Present
Allen Alderson	District Councillor	Present
Joshua Schumann	County Councillor	Not Present

Apologies for absence

There were none.

1. Declaration of Interests

Councillor Cane declared a non-pecuniary interest in the Vine House planning application.

Forum for members of the public.

Although members of the public attended the meeting no points were raised.

2. Planning Applications

There were no new applications.

18/00905/FUL Amendment – Part demolition & refurbishment of existing building and construction of 3 residential units, Vine House 6 Fair Green – This application was refused at an ECDC planning committee meeting this afternoon, attended by Councillor McMillan who spoke on behalf of the PC.

3. County Councillor Report

None received.

Councillor Cane had reminded Councillor Schumann about the highways issue at the Fair Green Great Lane bend.

4. District Councillor Report

Station Car Parking Fees

Earlier this week Greater Anglia increased its car parking charges including Ely railway station.

ECDC has reiterated its commitment to freezing parking fees in nearby council –run station car parks for at least another year. The charges in Ely are £3 per day (24 hours) or £12 per week (7 days). This compares to £7 per day and £38 per week at the NCP operated station car park.

Graffiti

Residents in the district are urged to report on graffiti they see on public property. The council's aim is to remove any graffiti within 48 hours. Please report any sightings of graffiti by either telephoning customer services on 01353 665555 or by completing the online form. Graffiti on private property is the responsibility of the property owner.

Visits to Local Businesses

It was disappointing that our planned visit to Corkers Crisps has to be cancelled at short notice because an audit was being undertaken. A visit to Dojma Sake Brewery in Fordham will be undertaken on Friday 1st March. We are also hoping to undertake a visit to the National Stud before May.

Ely Southern By-pass

The by-pass opened to traffic in October last year. Since then work has been continuing on the new walkway which crosses the river and railway by the viaduct. The walkway officially opened to the public on January 23rd. The County Councils work at the Underpass to improve access for pedestrians, cyclists, and light traffic continues and should be finished the end of February.

The Community Transport Grant Scheme

ECDC is currently seeking applications to deliver their Community Transport Grant Scheme for 2019/2020. The purpose of the scheme is to provide and deliver community transport services to improve accessibility to work, education, essential public services and social purposes in the district. It also looks to address the problems of social isolation by helping to improve transport choices in East Cambridgeshire and aims to fill the gaps left by conventional public transport services.

The scheme is not just limited to existing transport providers; the council also welcomes applications from charities, social enterprises and community groups. Local enterprises are welcome to submit applications from 1st February to 30th April 2019. The applicant must be able to demonstrate that they have an interest in transport and accessibility and must be a formally constituted group. Completed application forms must be returned no later than 5pm on Tuesday 30th April to Sally Bonnett, Infrastructure and Strategy Manager at East Cambridgeshire District Council. Forms can be submitted by post to: The Grange, Nutholt Lane, Ely, Cambridgeshire, CB7 4EE or by email: sally.bonnett@eastcambs.gov.uk

5. Minutes of previous Meeting

Approved as correct.

6.1 Reach Grant Fund

Nothing to report.

6.2 Finance

Nothing to report. Following discussion, it was agreed that the charge for shed storage and the power on the green should come from the Grant Fund reserves.

6.3 Parish Council Members

Nothing to report.

6.4 Play Spaces

New playground: - Nothing to report.

Old playground area development:

The PC have been successful in our application to the National Lottery Awards for All scheme and will receive £10,000 in the next couple of weeks.

The Tesco bags of help customer vote is ongoing, and we will find out at the end of March 2019 how much funding we will receive (£4000, £2000 or £1000). Looking at the vote so far, I think we're in for just the £1000!

- If we get £4000 from Tesco, we will have funding for picnic area and 2 benches for playground.
- If we get £2000 from Tesco, we will need £950 for the picnic area, and separate funding for benches.
- If we get £1000 from Tesco, we will need £1950 for the picnic area, and separate funding for benches.

In terms of timing, Prospects Trust allocated 4 weeks of work to complete the picnic area. This work could begin in March and the area would be ready for the fair at the start of May. Following discussion, the PC decided that up to £1950 would be approved, from The Grant Fund, to complete this project prior to the Fair.

6.5 Rights of Way

Nothing to report.

6.6 24Acres Committee

Nothing to report.

6.7 Friends of Reach wood

Nothing to report.

6.8 Neighbourhood Plan

REACH NEIGHBOURHOOD PLAN PROJECT GROUP - TERMS OF REFERENCE

Purpose

To oversee the production of a Neighbourhood Plan (the Plan) for Reach, based on the views of local people.

Among other things the Plan will:

- develop a shared vision for our village
- gauge the need for new homes, particularly affordable housing, in Reach and establish where any new housing should be built
- identify and protect leisure facilities, local green spaces and other areas of value to nature conservation, historic assets and landscape features
- influence what new buildings should look like
- influence transport and access issues around roads cycling, walking and access for disabled people
- promote renewable energy projects
- consider the need for community projects, including those to improve our environment, and social assistance

Governance

The Project Group is accountable to Reach Parish Council (the PC) which is the qualifying body for delivery of the Plan. The Project Group has delegated authority from the PC to deliver the Plan up to and including publication of the Consultation Draft Plan. The Project Group will provide monthly progress reports to the PC. The PC will approve the draft Plan prior to publication for consultation and independent examination.

Finance

All grants and funding for production of the Plan will be applied for and held by the PC which will ring-fence the funds.

Principles

The Project Group will aim to engage the entire population of Reach in the production of the Plan and will consult with all shades of opinion and interest. It will also engage relevant external stakeholders including the Local Authority and neighbouring Parish Councils.

The Project Group will operate in a democratic, transparent and fair fashion. Members will abide by the principles and practice of the Parish Council Code of Conduct and must declare when their personal interests are involved.

Decision making will be rigorous, recorded and evidenced.

Approach

Whilst abiding by the above principles, the Project Group will be delivery-focused in recognition of the time-sensitive nature of its work.

Key Roles

production of the Plan which will require the Project Group to:

- agree a position on specific issues and, where necessary, policy for ratification by the PC
- bring together local expertise, encourage joint working and strengthen links between stakeholders
- commission evidence gathering, and analysis where required
- act as the public face and principal contact for questions concerning the Plan
- encourage stakeholder engagement with the Plan

Membership

Membership of the Project group will be published.

The Project Group will be kept small, with no more than ten members, to assist in retaining focus and delivery.

In consideration of its makeup, the Project Group will be mindful of the need to be representative of the village as a whole and to make effective use of the skills held by villagers. The PC will be represented on the Project Group.

As the project progresses, the Project Group may seek external support, paid for where appropriate, to meet specific requirements. It may create working groups of villagers to help with specific challenges or temporarily co-opt villagers to the Project Group to assist. All such extensions of Project Group membership and the nature of the delegated tasking will be recorded.

Work Processes

The Project Group will draw on best practice for project management. In particular the Project Group will be driven, coordinated and monitored through a project plan which will be publicly available.

The Project Group will meet regularly and frequently (at least monthly) at locations that are accessible to the public. The Project Group will place particular emphasis on communicating with members of the village, operating through a variety of channels to ensure that its activities are as visible to as many villagers as possible. It will develop an engagement strategy to assist the process.

7. Precept – Approval of Y/E 2020 budget

Further to a budget meeting it was proposed that the precept for Y/E 2020 would be increased by 10%. This will cost a band D house an extra £6 per year. This increase will allow the Pc to start to build reserves for future works around the village

8. Reach Lode/Hythe Area

Councillor Ward and the Clerk have had a meeting and email correspondence with both GOBA and the EA, to discuss this area and the improvements that need to be made. The PC is keen to see the area in better condition and better used, while protecting its immense historical value, and the proposals under discussion would go a long way to achieving this. The discussions included works on the Hythe, to trees and vegetation, to improve the of the look of the area. To desilt the turning circle and the area to just beyond the pylons that would ensure that boats could use the improved facilities and would help deal with the silt issues. GOBA are keen to lead this project and the EA has suggested approximately £5000 would be available for these works.

GOBA will also add some money. Not unreasonably, they would like to know what the PC can contribute. In non-financial terms Councillor Ward is happy to contribute the ecological work that will be needed to get the permits. Following discussion, it was agreed that the PC would contribute £500 to this project.

9. PC Meeting start time – new time to be discussed.

The village centre committee have asked the PC if it would be possible to move the PC meeting times, as they have had an enquiry from the Swaffham Prior scouts to use the hall. This would be well needed regular income for the hall and the PC appreciates that the committee do not charge the PC for use of the hall and are keen to be helpful. It was agreed, that when required, to move the meetings to 7.45, but it would be appreciated if the scouts could lay out the hall for the PC meeting.

10. Information Items/AOB

There were none.

11. Payments

The Prospects Trust – Hedge cutting	£157.50
E. on – Power on the green	£31.78
Fuse – IT package	£513.48
Events Team – Christmas events	£586.31
D. Thomas – Trees 24Acres	£35.00
SLCC – The Yellow Book	£107.99

The PC were unhappy with the Birkett charges; therefore, the payment was not approved. **Councillor Bridgeman** to contact Birketts to clarify.



DRAFT Minutes of Reach Parish Council meeting held on; Wednesday 6th March 2019

Attendance

Charlotte Cane	Chair	Present
Hilary Fielding	Vice Chair	Not Present
Alex de Giorgio-Miller	Councillor	Present
Diana Ward	Councillor	Present
Andrew Trump	Councillor	Present
David McMillan	Councillor	Present
Nathan Bridgeman	Councillor	Not Present
Susan Bailey	Clerk	Present
Allen Alderson	District Councillor	Not Present
Joshua Schumann	County Councillor	Not Present

Apologies for absence

There were none.

1. Declaration of Interests

There were none.

Forum for members of the public.

A resident raised the issue of traffic using the village as a cut through whilst there are road works in Burwell. The PC said that the situation should be monitored. Data would also be useful for when the Weirs Drove site opens. **Clerk** to contact Swaffham Prior PC to see if it is possible to borrow their speed monitor.

A resident asked what the situation was regarding the Anglia water works on the Hythe. The PC referred to the information given in at the November meeting "*Councillor Trump had received communications from Anglian Water, regarding the land on The Hythe, stating that "there is little scope to release the land for other purposes". The PC find this disappointing and will continue communications.*"

It was noted that the road sign on the Green had been knocked down. Clerk stated that this had already been reported to Highways at CCC.

Several residents attended the meeting to discuss the Burwell Road planning application. The residents are very much against the felling of the trees with TPO's on these sites and are concerned about damage to the remaining trees. There is concern about the bin area and the impact on safety.

2. Planning Applications

18/01554/OUT – Amendment - Outline application for access approval for up to 4 dwellings, site NW of 9 Burwell Road.

Reach Parish Council would like to make the following comments to the amendments to this application.

The Parish Council reserves the right to comment again should the application be updated or changed.

The Parish Council notes that these amendments do not address all the points raised against this application.

- The Parish Council is very concerned about the impact on the trees, in particular those with TPO's. The new report attached to this amendment states there will be "possible damage" to a large number of trees on the site with TPO's attached.

1. G1 (TPO G2 - Limes)
2. T6 (TPO T3 – Walnut)
3. T5 (TPO T4 – Tree of heaven)
4. T13 (TPO T1 – Cherry)
5. T12 (TPO T2 – Walnut)
6. T10 & T9 (TPO G1 – Poplars)

- The TPO G2 is for the Row of Limes not the individual trees. Loss of any of these will affect the landscape as you enter the village and should not be destroyed.
- There is concern that more trees will need to be felled to allow for the road side bin area.

Given that two adjacent applications are being consulted on, both sharing the same access with the same issues of access, highway safety, tree damage and noise, the cumulative effect should be considered. Further, the Parish Council asks that the comments above are considered in relation to the second application for land behind Vine House 18/00905/FUL

The PC also has concerns about a precedent being set, noting that the areas between and further on from the two current planning applications could also be considered for development in the future, further exacerbating the issues outlined in this objection.

The PC was also concerned that should any buildings go ahead that work is restricted to only during the working day as the site is close to neighbouring houses.

If the Council is minded to approve this application, the Parish Council requests that the decision should be referred to the Planning Committee.

3. Neighbourhood Plan

Nick Acklam made a short presentation regarding his research on this subject. Having spoken with many people at agencies and similar sized villages who had experience in this process, he concluded that it would be beneficial for Reach to have a Neighbourhood Plan, to allow the community to have a greater influence over development in the future.

Councillor Cane recommended that a PC neighbourhood plan committee be set up, Councillors Cane & Ward to join. Councillor Cane proposed that Nick Acklam & Catherine Gibson be co-opted to the committee, approved. 3 residents at the meeting wished to become involved. **Councillor Cane** to organise a meeting of this committee. **Councillor Cane** to check whether Nick Acklam is able to Chair this committee.

4. County Councillor Report

None received.

5. District Councillor Report

None received.

6. Minutes of previous Meeting

Approved as correct.

7.1 Reach Grant Fund

Nothing to report. **Clerk** to ensure the new form is on the website.

7.2 Finance

Nothing to report.

A separate meeting will be held to discuss the budget and setting of the precept. **Clerk** to check the precept submission date.

7.3 Parish Council Members

Councillor Trump had looked into an online network "Nextdoor". **Councillors** to look at the site to evaluate how useful it maybe.

7.4 Play Spaces

New playground:

Nothing to report.

Old playground area development:

Tesco bags of help customer vote for funding in Jan-Feb 2019. We will find out at the end of March 2019 how much funding we will receive (£4000, £2000 or £1000). Facebook post and email asking people to vote for us will be written and sent.

Application to National Lottery Awards for All scheme for £10,000 submitted 12/12/2018. Should hear back within 10 weeks.

7.5 Rights of Way

Nothing to report.

7.6 24Acres Committee

Permission had been given, by the Clerk, for a replacement tree to be purchased.

7.7 Friends of Reach wood

A more exact timetable for the cutting of the meadow will be implemented this year.

7.8 GDPR

The Clerks work on this has now finished.

8. Reach Lode

Councillor Ward & the Clerk are in the process of meeting with GOBA, to see what can be done with this area.

9. Information Items/AOB

There were none.

11. Payments

S Bailey – Clerk salary	£1410.18
Village centre – Shed use for storage	£720
CR Contracting – Mowing & tree cutting	£600
N Acklam – Postage 24Acres	£6.50
E. on – power on the green	£20.51

The date of the next meeting will be Wednesday 6th February 2019 at 7.30pm. The Agenda for the meeting will be issued by the previous Wednesday and can be accessed from the Parish Council area of the Reach website (www.reach-village.co.uk).

Easter at St Mary's Burwell & St Etheldreda's Reach



Palm Sunday
14th April

8.00am Holy Communion
at Reach

10.00am Holy Communion
at St Mary's
for all ages together



Holy Week 15th - 21st April

Monday 15th and Tuesday 16th April
6pm Evening Prayer at St Mary's
Tuesday 16th April
3.30pm Student Cross visit to St Mary's
Wednesday 17th April
7pm Candlelit Night Prayer at Reach
Maundy Thursday 18th April
7.30pm Holy Communion at St Mary's
Good Friday 19th April
10.30am Messy Easter at St Mary's
11.00am Churches Together
Walk of Witness from North St Co-op
2pm Devotional Service at Reach



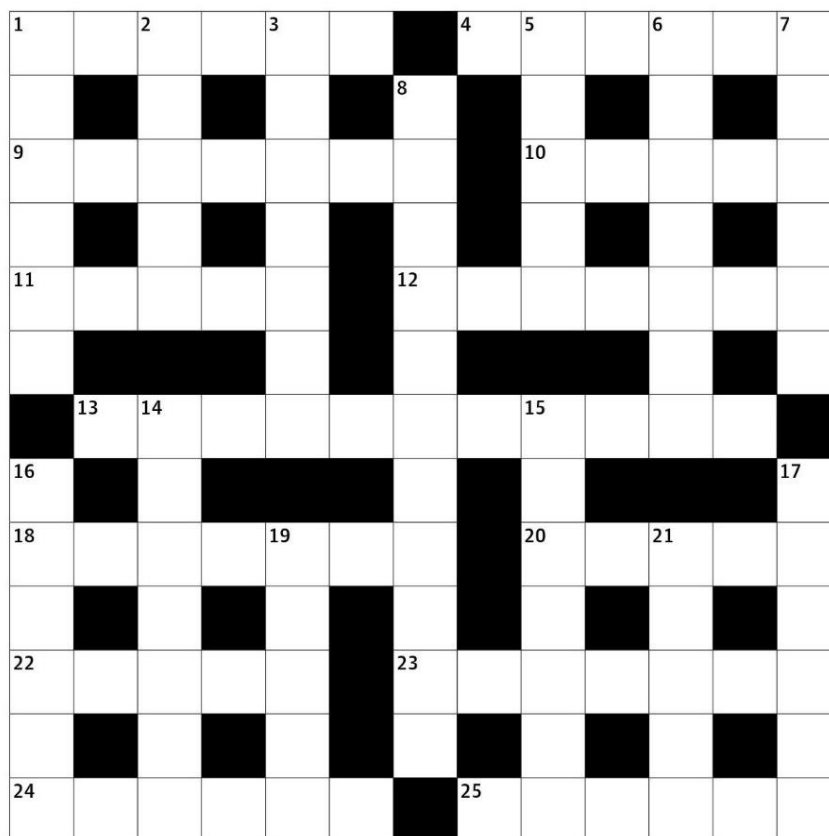
Easter Sunday
21st April

6am Churches Together
Sunrise Service
on Castle Mound
followed by breakfast

8am Holy Communion
at Reach

10am Holy Communion
at St Mary's
for all ages together
followed by Easter Egg Hunt

Crossword



Across

- 1** Remove weapons from (6)
- 4** Large – universal (6)
- 9** Sturdy ‘British’ dog (7)
- 10** Fed up (5)
- 11** Staunch (5)
- 12** Undergoing court process (2,5)
- 13** Dinner jacket worn with a white shirt (informal) (7,4)
- 18** Kenyan capital (7)
- 20** Irk (5)
- 22** Perch (5)
- 23** Anger at having been offended (7)
- 24** Work by Keats or Shelley, say (6)
- 25** Breathe out (6)

Down

- 1** Try something briefly and superficially (6)
- 2** Preposterous (5)
- 3** Sign of danger (or socialism)? (3,4)
- 5** Path around (5)
- 6** Gin and vermouth (7)
- 7** Hold close, affectionately (6)
- 8** Humiliating (11)
- 14** Embodiment (7)

- 15** Crate used by orators at Speakers’ Corner? (7)
- 16** Deceive – lead on (6)
- 17** Painted or sculpted band running round under the ceiling (6)
- 19** External (5)
- 21** Tropical fruit with yellow skin and pink pulp (5)

Church Services at Burwell and Reach

April 2019	St Mary's Burwell	St Etheldreda's Reach
Wednesday 3 rd	10.00am Holy Communion 11.00am Holy Communion at Ash Grove	
Thursday 4 th		8.15am Morning Prayer
Sunday 7th Lent 5	8.00 am Holy Communion 10.00am All Age Service	
Wednesday 10 th	10.00am Holy Communion	
Thursday 11 th		8.15am Morning Prayer
Sunday 14th Palm Sunday	10.00am Holy Communion	8.00am Holy Communion
Monday 15 th	6.00pm Candlelit Night Prayer	
Tuesday 16 th	6.00pm Candlelit Night Prayer	
Wednesday 17 th	10.30am Holy Communion at Ness Court	6.00pm Candlelit Night Prayer
Thursday 18 th Maundy Thursday	7.30pm Holy Communion, followed by The Watch	8.15am Morning Prayer
Friday 19th Good Friday	10.30am Messy Church	2.00 Good Friday Meditation
Sunday 21st Easter Sunday	6.00am Churches Together Easter Sunrise service on Castle Mound 10.00am All Age Communion	8.00am Holy Communion
Wednesday 24 th	10.00am Holy Communion	
Thursday 25 th		8.15am Morning Prayer
Sunday 28th Easter 2	8.00am Holy Communion 10.00am Holy Communion	
May 2019	St Mary's Burwell	St Etheldreda's Reach
Wednesday 1 st	10.00am Holy Communion 11.00am Holy Communion at Ash Grove	
Thursday 2 nd		8.15am Morning Prayer
Sunday 5th Easter 3	8.00am Holy Communion 10.00am All Age Service with Baptisms	6.00pm Reach Fair Songs of Praise
Wednesday 8 th	10.00am Holy Communion	
Thursday 9 th		8.15am Morning Prayer
Sunday 12th Easter 4	10.00am Christian Aid Service 7.00pm Sunday @ 7	8.00am Holy Communion
Wednesday 15 th	10.30am Holy Communion at Ness Court	
Thursday 16 th		8.15am Morning Prayer
Sunday 19th Easter 5	8.00am Holy Communion 10.00 am Holy Communion	
Wednesday 22 nd	10.00am Holy Communion	
Thursday 23 rd		8.15am Morning Prayer
Sunday 26th Easter 6	8.00am Holy Communion 10.00am Holy Communion 4.00pm Messy Church	
Wednesday 29 th	10.00am Holy Communion	
Thursday 30 th		8.15am Morning Prayer

Bus Timetable

Reach is served by the Stagecoach number 11 bus service - summary of all buses serving Reach is shown below.

Please note that there is no bus service at all on Sundays

Cambridge to Bury - Monday to Friday (excluding Bank Holidays)				
Cambridge Drummer Street	Reach	Burwell Ness Road	Newmarket Bus Station	Bury Bus Station
06:50	07:35	07:45	08:17*	08:49
07:50	08:35	08:45	09:17*	09:49
09:50	10:35	10:45	11:17*	11:49
11:50	12:35	12:45	13:17*	13:49
13:50	14:35	14:45	15:17*	15:49
15:50	16:42	16:52	17:24	17:55
18:15	19:00	19:10		
19:15	20:00	20:10		

Cambridge to Bury - Saturdays (excluding Bank Holidays)				
Cambridge Drummer Street	Reach	Burwell Ness Road	Newmarket Bus Station	Bury Bus Station
06:50	07:35	07:45	08:17*	
07:50	08:35	08:45	09:17*	09:49
09:50	10:35	10:45	11:17*	11:49
11:50	12:35	12:45	13:17*	13:49
13:50	14:35	14:45	15:17*	15:49
15:50	16:35	16:52	17:17	17:55
18:15	19:00	19:10		
19:15	20:00	20:10		

Bury to Cambridge - Monday to Friday (excluding Bank Holidays)				
Bury Bus Station	Newmarket Bus Station	Burwell Ness Road	Reach	Cambridge Drummer Street
		06:14	06:29	07:22
		06:39	06:54	07:50
	08:40	09:08	09:23	10:13
10:05	10:35*	11:08	11:23	12:13
12:05	12:35*	13:08	13:23	14:13
14:05	14:35*	15:08	15:23	16:13
15:05	15:35*	16:08	16:23	17:13
16:05	16:35*	17:08	17:23	18:13
17:05	17:35*	18:08	18:23	19:13

Bury to Cambridge - Saturdays (excluding Bank Holidays)				
Bury Bus Station	Newmarket Bus Station	Burwell Ness Road	Reach	Cambridge Drummer Street
		06:19	06:34	07:22
		06:49	07:04	08:00
	08:40	09:08	09:23	10:13
10:05	10:35*	11:08	11:23	12:13
12:05	12:35*	13:08	13:23	14:13
14:05	14:35*	15:08	15:23	16:13
15:05	15:35*	16:08	16:23	17:13
16:05	16:35*	17:08	17:23	18:13
17:05	17:35*	18:08	18:23	19:13

* These are arrival times, buses will depart approximately 5-7 minutes later

A full timetable can be downloaded from www.reach-village.co.uk/bus_service.html

Diary Dates

Apr	Event	Location	Time
Wednesday 3	Parish Council Meeting	Village Centre	7.30pm
Thursday 4	Recycling Day (Green)		
Wednesday 10	Village Centre Committee Meeting	Village Centre	8.00pm
Thursday 11	Recycling Day (Blue)		
Friday 12	Mobile Library – Route C12	Village Green	2.20pm
Thursday 18	Recycling Day (Green)		
Thursday 25	Recycling Day (Blue)		

May	Event	Location	Time
Wednesday 1	Parish Council Meeting	Village Centre	7.30pm
Thursday 2	Recycling Day (Green)		
Sunday 5	Eve of Reach Fair Quiz	Village Centre	7.30pm
Monday 6	Reach Fair	Reach Village	Midday to 5pm
Wednesday 8	Village Centre Committee Meeting	Village Centre	8.00pm
Thursday 9	Recycling Day (Blue)		
Friday 10	Mobile Library – Route C12	Village Green	2.20pm
Thursday 16	Recycling Day (Green)		
Thursday 23	Recycling Day (Blue)		

Then and Now (see opposite page for pictures)

Reach Village Shop and Post Office c1960

The enamel signs adorn the wood and corrugated iron shed which provided storage for the shops additional inventory.

Toby and Bess ran the shop for most of my childhood. Before school the village children would descend on the shop for sweets, soft drinks and ice creams prior to catching the bus to schools at Swaffham Prior or Burwell.

We also bought our fishing licenses here and if during the season we caught any specimen fish worthy of note, it was here we would take the unfortunate fish to be weighed on the shop scales. Toby would issue a certificate which would be entered into that season's competition. I doubt this practice continues today.

Toby was a very tall man and his stature befitted his additional position as special constable for the village which commanded some considerable respect, not least from the village children.

Chris Patterson

Contact Information

Parish Council – see “Know Your Parish Council”			
Village Centre			
Chair	Andrew Towers		01638 742484
Finance	Andrew Trump		01638 743335
Bookings	Grahame Radford		01638 742814
Marquee Bookings	Andrew Hall		01638 743737
Church			
Vicar	Eleanor Williams		01638 741262
Curate (duty days Wed, Fri and Sun)	Reverend Paula Spalding		07545 868549
Priest in Retirement	Reverend David King		01638 742924
Parochial Church Council Member	Pam King		01638 742924
Churchwarden	Dr Stephen Martin		01638 611235
Churchwarden at Burwell/Reach	Sarah Wingate		01638 742498
Emergencies			
Electricity (Eastern Electric)			0800 783 8838
Police (Emergency)/(Non-Emergency)			999/101
Water (Anglian Water)			08457 145145
Doctors, Burwell			
Appointments and Emergencies			01638 741234
Enquiries			01638 743602
Community Nurses			01638 742382
Surgery Hours	Mon 8.30am to 6.00pm with extended hours on a Monday please phone the surgery for details		